

Rates

Table with columns: Instrumento, TNA, values for Call 1d, Call 7d, Caución 7d, Caución 30d.

Table with columns: Instrumento, TNA, values for BADLAR Priv. (>\$1mm), TM20 Priv. (>\$20mm), TFM - Latiq 7D.

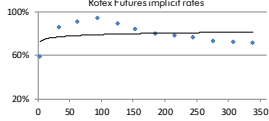
TNA ponderada

BCRA A3500 USD \$57,318

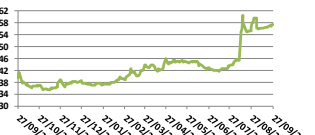
Table with columns: Days, Change, Annualized, values for 7d, 31d, 63d, 92d, 184d, 365d.

Rofex - ARS USD Futures

Table with columns: Futures, Maturity, Days, USD, Rates, -d1, Ch, Op. 1, values for SPOT, DLR092019, DLR102019, etc.



ARS Spet



Bonds

Table with columns: Bond, Code, Amt Out., Coupon, Price, YTM, MD, Maturity, values for Sovereign Bond Inflation Indexed, Gallito \$ 03-20, etc.

Sovereign ARS Floating Badlar

Table with columns: Bond, Code, Amt Out., Coupon, Price, YTM, MD, Maturity, values for Bonar 20, Bonar 22, etc.

Sub-Sovereign ARS Floating Badlar

Table with columns: Bond, Code, Amt Out., Coupon, Price, YTM, MD, Maturity, values for CABA TD C20, CABA TD C24, etc.

Table with columns: Bond, Code, Amt Out., Coupon, Price, YTM, MD, Maturity, values for CABA TD C23, PBA TD 51 C2, etc.

Sovereign Dual ARS Fixed Dollar - Linked

Table with columns: Bond, Code, Amt Out., Coupon, Price, YTM, MD, Maturity, values for Bonos Dual Feb-20, Bonos Dual ARS Fixed.

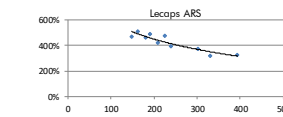
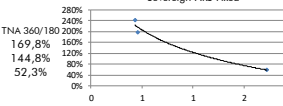
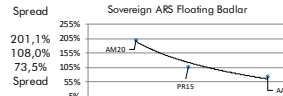
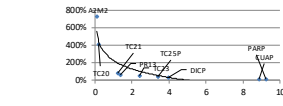
Sovereign ARS Fixed

Table with columns: Bond, Code, Amt Out., Coupon, Price, YTM, MD, Maturity, values for Bonite \$ Oct 21, Bonite \$ Oct 23, etc.

Lecops ARS

Table with columns: Bond, Days, Amt Out., Coupon, Price, TIR, MD, Maturity, values for S30G9, S1359, S3059, etc.

\*\* Compounded monthly



Bonds

Table with columns: Bond, Code, Amt Out., Coupon, Price\*, YTM, MD, Maturity, values for Sovereign USD.

Table with columns: Bond, Code, Amt Out., Coupon, Price\*, YTM, MD, Maturity, values for Bonar 20, Bonos Int.21 NYL, etc.

Sub-Sovereign USD

Table with columns: Bond, Code, Amt Out., Coupon, Price\*, YTM, MD, Maturity, values for Bs. As. 21 NYL, CABA 21 NYL, etc.

Table with columns: Bond, Code, Amt Out., Coupon, Price\*, YTM, MD, Maturity, values for Córdoba 21 NYL, Jujuy 22 NYL, etc.

Table with columns: Bond, Code, Amt Out., Coupon, Price\*, YTM, MD, Maturity, values for Sta Fe 23 NYL, Bs. As. 24 NYL, etc.

Table with columns: Bond, Code, Amt Out., Coupon, Price\*, YTM, MD, Maturity, values for Chaco 24 NYL, La Rioja 25 NYL, etc.

Table with columns: Bond, Code, Amt Out., Coupon, Price\*, YTM, MD, Maturity, values for T.Fuego 27 NYL, Mendoza 24 NYL, etc.

Table with columns: Bond, Code, Amt Out., Coupon, Price\*, YTM, MD, Maturity, values for Mun. Cord 24 NYL, Chubut 26 NYL, etc.

Table with columns: Bond, Code, Amt Out., Coupon, Price\*, YTM, MD, Maturity, values for Entre Rios 25 NYL, Rio Negro 25 NYL, etc.

Table with columns: Bond, Code, Amt Out., Coupon, Price\*, YTM, MD, Maturity, values for Neuquen 25 NYL, Córdoba 24 NYL, etc.

Table with columns: Bond, Code, Amt Out., Coupon, Price\*, YTM, MD, Maturity, values for Bs. As. 27 NYL, GABA 27 NYL, etc.

Table with columns: Bond, Code, Amt Out., Coupon, Price\*, YTM, MD, Maturity, values for Bs. As. 28 NYL, Sta Fe 27 NYL, etc.

Table with columns: Bond, Code, Amt Out., Coupon, Price\*, YTM, MD, Maturity, values for Córdoba 27 NYL, Par Bs. As. NYL, etc.

Table with columns: Bond, Code, Amt Out., Coupon, Price\*, YTM, MD, Maturity, values for Corporate USD, Pan Am 2021, etc.

Table with columns: Bond, Code, Amt Out., Coupon, Price\*, YTM, MD, Maturity, values for Hipotecario 2020, YPF 2021, etc.

Table with columns: Bond, Code, Amt Out., Coupon, Price\*, YTM, MD, Maturity, values for Cablevision 2021, Transener 2021, etc.

Table with columns: Bond, Code, Amt Out., Coupon, Price\*, YTM, MD, Maturity, values for CGC 2021, Genneiss 2022, etc.

Table with columns: Bond, Code, Amt Out., Coupon, Price\*, YTM, MD, Maturity, values for CDMX 2022, Clisa 2023, etc.

Table with columns: Bond, Code, Amt Out., Coupon, Price\*, YTM, MD, Maturity, values for AISA 2023, Tecpetrol 2022, etc.

Table with columns: Bond, Code, Amt Out., Coupon, Price\*, YTM, MD, Maturity, values for Albonesi 2023, AA2000 2027, etc.

Table with columns: Bond, Code, Amt Out., Coupon, Price\*, YTM, MD, Maturity, values for IRSA Prop. 2023, Cresud 2023, etc.

Table with columns: Bond, Code, Amt Out., Coupon, Price\*, YTM, MD, Maturity, values for YPF 2024, Pampa 2023, etc.

Table with columns: Bond, Code, Amt Out., Coupon, Price\*, YTM, MD, Maturity, values for Arcor 2023, AES Arg. G. 2024, etc.

Table with columns: Bond, Code, Amt Out., Coupon, Price\*, YTM, MD, Maturity, values for Roghso 2024, Capow 2024, etc.

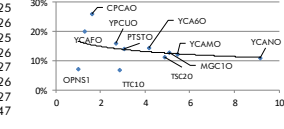
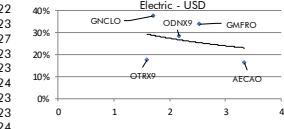
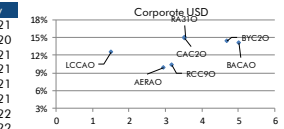
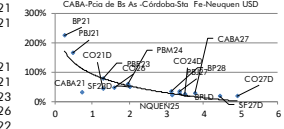
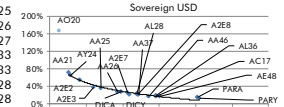
Table with columns: Bond, Code, Amt Out., Coupon, Price\*, YTM, MD, Maturity, values for YPF 2025, Galicia 2026, etc.

Table with columns: Bond, Code, Amt Out., Coupon, Price\*, YTM, MD, Maturity, values for TGS 2025, Telecom 2026, etc.

Table with columns: Bond, Code, Amt Out., Coupon, Price\*, YTM, MD, Maturity, values for Pampa 2027, Macro 2026, etc.

Table with columns: Bond, Code, Amt Out., Coupon, Price\*, YTM, MD, Maturity, values for YPF 2027, YPF 2047, etc.

\*\* Dirty Price, \*\* Callable Bond - Yield to Maturity



El presente documento ha sido realizado por Argenfunds S.A. con fines estrictamente informativos. No debe ser tomado como una invitación a suscribir cotupartes ni como una oferta de compra o venta de valores. El documento se ha realizado con fuentes de información consideradas confiables, pero la empresa no puede garantizar la exactitud de las mismas. Los fondos comunes de inversión están sometidos a variaciones en los precios de los activos que pueden afectar su rendimiento. Los rendimientos pasados de los fondos comunes de inversión no garantizan el desempeño futuro de los mismos. Las inversiones en cotupartes del Fondo no constituyen depósitos en Banco Macro S.A. a los fines de la Ley de Entidades Financieras ni cuentan con ninguna de las garantías que tales depósitos a la vista o a plazo pueden gozar de acuerdo con la legislación y reglamentación aplicables en materia de depósitos en entidades financieras. Asimismo, Banco Macro S.A. se encuentra impedida por normas del Banco Central de la República Argentina de asumir, tácita o expresamente, compromiso alguno en cuanto al mantenimiento, en cualquier momento, del valor del capital invertido, al rendimiento, al valor del rescate de la cuota partes o al otorgamiento de liquidez a tal fin. Gráficos de Elaboración propia. Fuentes Rofex CAFCY y Bolsar